

## SPECOLE

- Di solida e robusta costruzione.
- Vetro in pyrex. A richiesta, protezione esterna in plexiglas.
- Corredate di speciali tiranti e guarnizioni per eliminare le pressioni di carico e le vibrazioni sul vetro.
- Finitura standard: lucidatura esterna e satinatura interna grana 120. Altre finiture a richiesta.
- Max. pressione di esercizio: 10 bar.

## SIGHT GLASSES

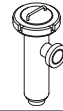
- High strength construction.
- Pyrex glass. On request plexiglas external guard.
- Equipped with special tie rods and seals to prevent load pressures and vibrations on the glass.
- Standard finish: 120 grain external polishing and internal glazing. Other finishes on request.
- Maximum operating pressure: 10 bars.

## REGARDS

- Fabrication solide et robuste.
- Verre en pyrex. Sur demande, protection externe en plexiglas.
- Munis de tirants spéciaux et de joints pour éliminer les pressions de charge et les vibrations sur le verre.
- Finissage standard: polissage extérieur et satinage intérieur grain 120. Autres finissages sur demande.
- Pression d'exploitation maximum: 10 bars.

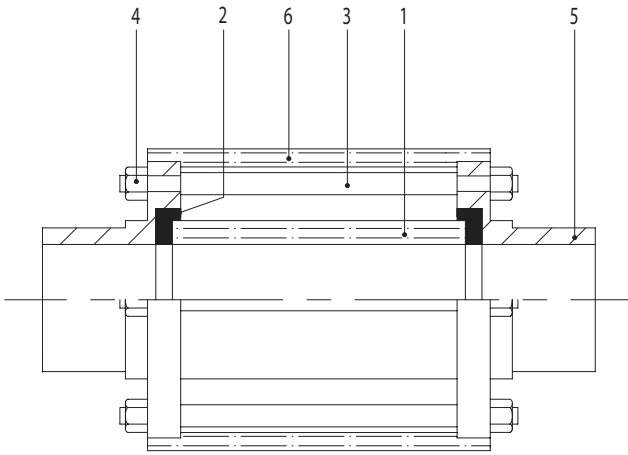
## MIRILLAS

- Fabricación sólida y robusta.
- Vidrio pyrex. A pedido, protección exterior de plexiglás.
- Equipadas con tirantes especiales y con juntas para eliminar las presiones de carga y las vibraciones sobre el vidrio.
- Acabado estándar: pulido exterior y satinado interior grano 120. A pedido, se pueden suministrar otros acabados.
- Máxima presión de ejercicio: 10 bares.



**SPECOLA  
SIGHT GLASS**

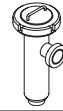
**REGARD  
MIRILLA**



- |                                                    |                                                                                     |
|----------------------------------------------------|-------------------------------------------------------------------------------------|
| 1. Tubo pyrex<br>Pyrex pipe<br>Tube pyrex<br>Pyrex | 4. Dado autobloccante<br>Self-locking nut<br>Écrou de sûreté<br>Tuerca de seguridad |
| 2. Guarnizione<br>Seal<br>Joint<br>Junta           | 5. Flangia<br>Flange<br>Bride<br>Brida                                              |
| 3. Tirante<br>Tie rod<br>Tirant<br>Tirante         | 6. Protezione<br>Guard<br>Protection<br>Protección                                  |

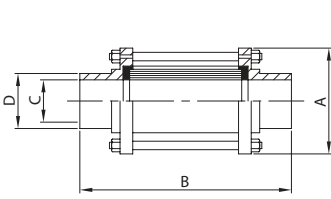
CODIFICAIONE  
CODING  
CODIFICATION  
CODIFICACIÓN

| Pos. | Cod. base | Norme | 1"<br>25 | D 25<br>28 | D 32<br>34 | 1 1/2"<br>38 | D 40<br>40 | 2"<br>51 | D 50<br>52 | 2 1/2"<br>63 | D 65<br>70 | 3"<br>76 | D 80<br>85 | 4"<br>101 | D 100<br>101 | 4"<br>104 | D 100<br>104 | Mat.    | Part.<br>o agg. |
|------|-----------|-------|----------|------------|------------|--------------|------------|----------|------------|--------------|------------|----------|------------|-----------|--------------|-----------|--------------|---------|-----------------|
| 1    | 450       |       | 25       | 28         | 34         | 38           | 40         | 51       | 52         | 63           | 70         | 76       | 85         | 101       | 101          | 104       | 104          | P       | 01              |
| 2    | 450       |       | 25       | 28         | 34         | 38/40        | 38/40      | 51/52    | 51/52      | 63           | 70         | 76       | 85         | 101       | 101          | 104       | 104          | S/E/V/T | 02              |
| 3    | 450       |       | 25/104   | 25/104     | 25/104     | 25/104       | 25/104     | 25/104   | 25/104     | 25/104       | 25/104     | 25/104   | 25/104     | 25/104    | 25/104       | 25/104    | 25/104       | 4L      | 03              |
| 4    | 450       |       | 25/104   | 25/104     | 25/104     | 25/104       | 25/104     | 25/104   | 25/104     | 25/104       | 25/104     | 25/104   | 25/104     | 25/104    | 25/104       | 25/104    | 25/104       | 4L      | 04              |
| 5    | 450       | L     | 25       | 28         | 34         | 38           | 40         | 51       | 52         | 63           | 70         | 76       | 85         | 101       | 101          | 104       | 104          | 4L/6L   | 05              |
| 6    | 450       |       | 25       | 28         | 34         | 38/40        | 38/40      | 51/52    | 51/52      | 63           | 70         | 76       | 85         | 101/104   | 101/104      | 101/104   | 101/104      | PG      | 06              |



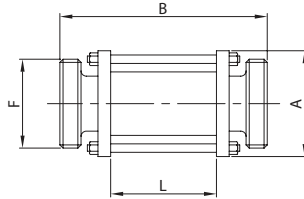
**SPECOLA EL.  
SIGHT GLASS PE.  
REGARD BL.  
MIRILLA EL.**

**450 L**



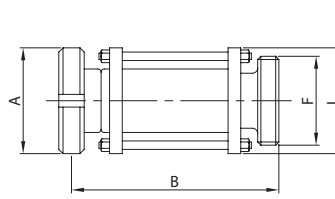
**SPECOLA EF/EF.  
SIGHT GLASS ME./ME.  
REGARD BF/BF.  
MIRILLA ER./ER.**

**452 D**



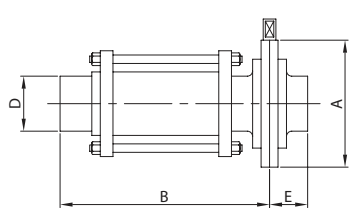
**SPECOLA BC. G./EF. MT.  
SIGHT GLASS TP. N./ME. ED.  
REGARD PC. E./BF. DN.  
MIRILLA C. T./ER. MD.**

**454 D**



**SPECOLA EL. + V. F. EL.  
SIGHT GLASS PE. + B. V. PE.  
REGARD BL. + V. P. BL.  
MIRILLA EL. + V. M. EL.**

**460 L**



| DN  | A     | B     | C     | D     | gr    |
|-----|-------|-------|-------|-------|-------|
| 28  | 60,0  | 143,0 | 25,0  | 28,0  | 400   |
| 34  | 65,0  | 149,0 | 31,0  | 34,0  | 500   |
| 40  | 70,0  | 153,0 | 37,0  | 40,0  | 680   |
| 52  | 85,0  | 157,0 | 49,0  | 52,0  | 860   |
| 70  | 100,0 | 163,0 | 66,0  | 70,0  | 1.090 |
| 85  | 115,0 | 169,0 | 81,0  | 85,0  | 1.280 |
| 101 | 140,0 | 173,0 | 97,6  | 101,6 | 2.760 |
| 104 | 140,0 | 173,0 | 100,0 | 104,0 | 2.760 |

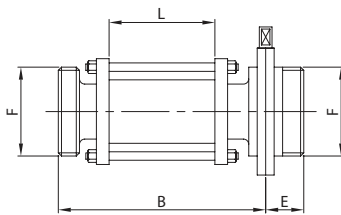
| DN  | A     | B     | F     | L    | gr    |
|-----|-------|-------|-------|------|-------|
| 25  | 60,0  | 157,0 | 52-6  | 83,0 | 610   |
| 32  | 65,0  | 157,0 | 58-6  | 83,0 | 700   |
| 40  | 70,0  | 157,0 | 65-6  | 83,0 | 920   |
| 50  | 85,0  | 157,0 | 78-6  | 83,0 | 1.230 |
| 65  | 100,0 | 161,0 | 95-6  | 83,0 | 1.520 |
| 80  | 115,0 | 171,0 | 110-4 | 83,0 | 1.770 |
| 100 | 140,0 | 171,0 | 130-4 | 83,0 | 3.370 |
| 104 | 140,0 | 171,0 | 130-4 | 83,0 | 3.370 |

| DN  | A     | B     | F     | L     | gr    |
|-----|-------|-------|-------|-------|-------|
| 25  | 63,0  | 157,0 | 52-6  | 60,0  | 750   |
| 32  | 70,0  | 160,0 | 58-6  | 65,0  | 900   |
| 40  | 78,0  | 161,0 | 65-6  | 70,0  | 1.180 |
| 50  | 92,0  | 163,0 | 78-6  | 85,0  | 1.600 |
| 65  | 112,0 | 169,0 | 95-6  | 100,0 | 2.200 |
| 80  | 127,0 | 179,0 | 110-4 | 115,0 | 2.630 |
| 100 | 148,0 | 181,0 | 130-4 | 140,0 | 4.790 |
| 104 | 148,0 | 181,0 | 130-4 | 140,0 | 4.790 |

| DN  | A     | B     | D     | E    | gr    |
|-----|-------|-------|-------|------|-------|
| 28  | 79,0  | 151,0 | 28,0  | 34,0 | 760   |
| 34  | 85,0  | 154,0 | 34,0  | 38,0 | 900   |
| 40  | 92,0  | 156,0 | 40,0  | 38,0 | 1.180 |
| 52  | 105,0 | 158,0 | 52,0  | 40,0 | 1.500 |
| 70  | 125,0 | 162,0 | 70,0  | 41,0 | 1.970 |
| 85  | 137,0 | 165,0 | 85,0  | 42,0 | 2.430 |
| 101 | 157,0 | 167,0 | 101,6 | 44,0 | 4.180 |
| 104 | 157,0 | 167,0 | 104,0 | 44,0 | 4.180 |

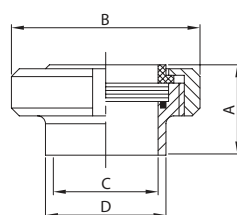
**SPECOLA EF. + V. F. EF.  
SIGHT GLASS ME. + B. V. ME.  
REGARD BF. + V. P. BF.  
MIRILLA ER. + V. M. ER.**

**462 D**



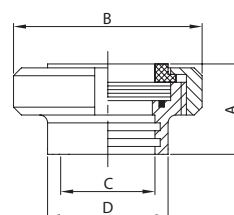
**SPECOLA PIANA ES.  
SIGHT GLASS WE.  
INDIC. DE CIRC. PLAT BS.  
MIRILLA PLANA ES.**

**441 D**



**SPECOLA PIANA EM.  
SIGHT GLASS EE.  
INDIC. DE CIRC. PLAT BD.  
MIRILLA PLANA EM.**

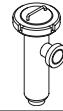
**442 D**



| DN  | B     | E    | F     | L    | gr    |
|-----|-------|------|-------|------|-------|
| 25  | 158,0 | 34,0 | 52-6  | 83,0 | 1.090 |
| 32  | 158,0 | 34,0 | 58-6  | 83,0 | 1.310 |
| 40  | 158,0 | 38,0 | 65-6  | 83,0 | 1.650 |
| 50  | 158,0 | 38,0 | 78-6  | 83,0 | 2.170 |
| 65  | 161,0 | 38,0 | 95-6  | 83,0 | 2.650 |
| 80  | 166,0 | 41,5 | 110-4 | 83,0 | 3.370 |
| 100 | 166,0 | 44,0 | 130-4 | 83,0 | 5.330 |
| 104 | 166,0 | 44,0 | 130-4 | 83,0 | 5.330 |

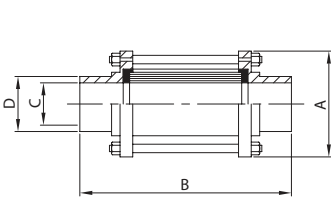
| DN  | A    | B     | C     | D     | gr    |
|-----|------|-------|-------|-------|-------|
| 25  | 35,0 | 63,0  | 25,0  | 28,0  | 350   |
| 32  | 38,0 | 70,0  | 31,0  | 34,0  | 420   |
| 40  | 39,0 | 78,0  | 37,0  | 40,0  | 530   |
| 50  | 42,0 | 92,0  | 49,0  | 52,0  | 730   |
| 65  | 47,0 | 112,0 | 66,0  | 70,0  | 1.110 |
| 80  | 52,0 | 127,0 | 81,0  | 85,0  | 1.590 |
| 100 | 62,0 | 148,0 | 97,6  | 101,6 | 2.380 |
| 104 | 62,0 | 148,0 | 100,0 | 104,0 | 2.380 |

| DN  | A    | B     | C     | D     | gr    |
|-----|------|-------|-------|-------|-------|
| 25  | 35,0 | 63,0  | 28,0  | 35,0  | 350   |
| 32  | 38,0 | 70,0  | 34,0  | 41,0  | 420   |
| 40  | 39,0 | 78,0  | 40,0  | 48,0  | 530   |
| 50  | 42,0 | 92,0  | 52,0  | 61,0  | 730   |
| 65  | 47,0 | 112,0 | 70,0  | 79,0  | 1.110 |
| 80  | 52,0 | 127,0 | 85,0  | 93,0  | 1.590 |
| 100 | 62,0 | 148,0 | 101,6 | 114,0 | 2.380 |
| 104 | 62,0 | 148,0 | 104,0 | 114,0 | 2.380 |



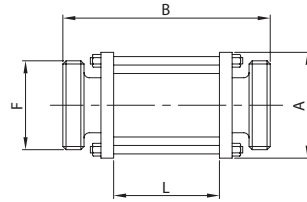
**SPECOLA EL.  
SIGHT GLASS PE.  
REGARD BL.  
MIRILLA EL.**

**450 L**



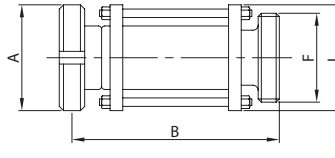
**SPECOLA EF/EF.  
SIGHT GLASS ME./ME.  
REGARD BF/BF.  
MIRILLA ER./ER.**

**452 S**



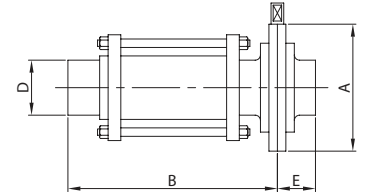
**SPECOLA BL. G./EF. MT.  
SIGHT GLASS L. N./ME. ED.  
REGARD PL. E./BF. DN.  
MIRILLA C. T./ER. MD.**

**454 S**



**SPECOLA EL. + V. F. EL.  
SIGHT GLASS PE. + B. V. PE.  
REGARD BL. + V. P. BL.  
MIRILLA EL. + V. M. EL.**

**460 L**



| DN  | A     | B     | C    | D     | gr    |
|-----|-------|-------|------|-------|-------|
| 25  | 55,0  | 147,0 | 22,4 | 25,4  | 400   |
| 38  | 70,0  | 153,0 | 35,1 | 38,1  | 620   |
| 51  | 85,0  | 153,0 | 47,8 | 50,8  | 860   |
| 63  | 95,0  | 163,0 | 60,5 | 63,5  | 950   |
| 76  | 105,0 | 173,0 | 72,9 | 76,2  | 1.100 |
| 101 | 140,0 | 173,0 | 97,6 | 101,6 | 2.760 |

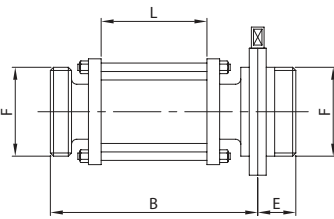
| DN  | A     | B     | F     | L    | gr    |
|-----|-------|-------|-------|------|-------|
| 25  | 55,0  | 165,0 | 40-6  | 83,0 | 550   |
| 38  | 70,0  | 165,0 | 60-6  | 83,0 | 940   |
| 51  | 85,0  | 165,0 | 70-6  | 83,0 | 1.270 |
| 63  | 95,0  | 165,0 | 85-6  | 83,0 | 1.400 |
| 76  | 105,0 | 165,0 | 98-6  | 83,0 | 1.710 |
| 101 | 140,0 | 183,0 | 132-6 | 83,0 | 3.760 |

| DN  | A     | B     | F     | L     | gr    |
|-----|-------|-------|-------|-------|-------|
| 25  | 51,0  | 156,0 | 40-6  | 55,0  | 630   |
| 38  | 74,0  | 159,0 | 60-6  | 70,0  | 1.170 |
| 51  | 84,0  | 159,0 | 70-6  | 85,0  | 1.500 |
| 63  | 100,0 | 164,0 | 85-6  | 95,0  | 1.840 |
| 76  | 114,0 | 169,0 | 98-6  | 105,0 | 2.360 |
| 101 | 150,0 | 178,0 | 132-6 | 140,0 | 4.980 |

| DN  | A     | B     | D     | E    | gr    |
|-----|-------|-------|-------|------|-------|
| 25  | 79,0  | 153,0 | 25,4  | 34,0 | 760   |
| 38  | 85,0  | 156,0 | 38,1  | 38,0 | 1.020 |
| 51  | 105,0 | 156,0 | 50,8  | 40,0 | 1.500 |
| 63  | 112,0 | 162,0 | 63,5  | 40,0 | 1.680 |
| 76  | 125,0 | 167,0 | 76,2  | 41,0 | 1.980 |
| 101 | 157,0 | 167,0 | 101,6 | 44,0 | 4.180 |

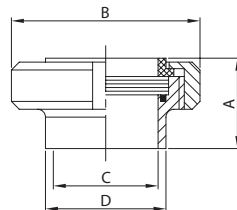
**SPECOLA EF. + V. F. EF.  
SIGHT GLASS ME. + B. V. ME.  
REGARD BF. + V. P. BF.  
MIRILLA ER. + V. M. ER.**

**462 S**



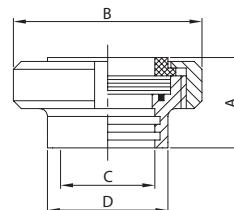
**SPECOLA PIANA ES.  
SIGHT GLASS WE.  
INDIC. DE CIRC. PLAT BS.  
MIRILLA PLANA ES.**

**441 S**



**SPECOLA PIANA EM.  
SIGHT GLASS EE.  
INDIC. DE CIRC. PLAT BD.  
MIRILLA PLANA EM.**

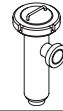
**442 S**



| DN  | B     | E    | F     | L    | gr    |
|-----|-------|------|-------|------|-------|
| 25  | 162,0 | 34,0 | 40-6  | 83,0 | 990   |
| 38  | 162,0 | 38,0 | 60-6  | 83,0 | 1.620 |
| 51  | 162,0 | 40,0 | 70-6  | 83,0 | 2.120 |
| 63  | 163,0 | 40,0 | 85-6  | 83,0 | 2.450 |
| 76  | 163,0 | 41,0 | 98-6  | 83,0 | 3.090 |
| 101 | 172,0 | 44,0 | 132-6 | 83,0 | 5.730 |

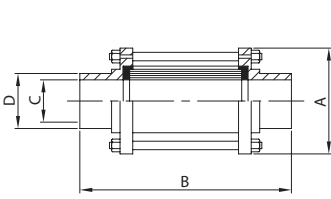
| DN  | A    | B     | C    | D     | gr    |
|-----|------|-------|------|-------|-------|
| 25  | 29,0 | 51,0  | 22,4 | 25,4  | 220   |
| 38  | 33,0 | 74,0  | 35,1 | 38,1  | 500   |
| 51  | 36,0 | 84,0  | 47,8 | 50,8  | 540   |
| 63  | 41,0 | 100,0 | 60,5 | 63,5  | 990   |
| 76  | 48,0 | 114,0 | 72,9 | 76,2  | 1.250 |
| 101 | 40,0 | 150,0 | 97,6 | 101,6 | 2.030 |

| DN  | A    | B     | C     | D     | gr    |
|-----|------|-------|-------|-------|-------|
| 25  | 29,0 | 51,0  | 25,4  | 32,0  | 220   |
| 38  | 33,0 | 74,0  | 38,1  | 48,0  | 500   |
| 51  | 36,0 | 84,0  | 50,8  | 61,0  | 540   |
| 63  | 41,0 | 100,0 | 63,5  | 73,5  | 990   |
| 76  | 48,0 | 114,0 | 76,2  | 86,0  | 1.250 |
| 101 | 40,0 | 154,0 | 101,6 | 116,0 | 2.030 |



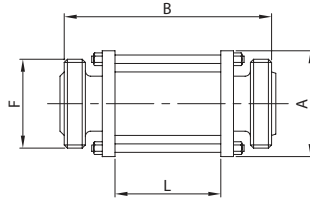
**SPECOLA EL.  
SIGHT GLASS PE.  
REGARD BL.  
MIRILLA EL.**

**450 L**



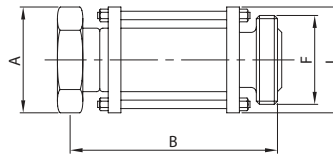
**SPECOLA EF/EF.  
SIGHT GLASS ME./ME.  
REGARD BF./BF.  
MIRILLA ER./ER.**

**452 B**



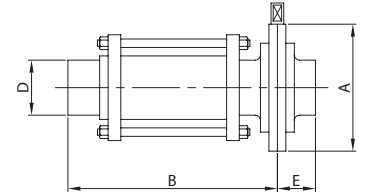
**SPECOLA BL. G./EF. MT.  
SIGHT GLASS L. N./ME. ED.  
REGARD PL. E./BF. DN.  
MIRILLA C. T./ER. MD.**

**454 B**



**SPECOLA EL. + V. F. EL.  
SIGHT GLASS PE. + B. V. PE.  
REGARD BL. + V. P. BL.  
MIRILLA EL. + V. M. EL.**

**460 L**



| DN  | A     | B     | C    | D     | gr    |
|-----|-------|-------|------|-------|-------|
| 25  | 55,0  | 147,0 | 22,4 | 25,4  | 400   |
| 38  | 70,0  | 153,0 | 35,1 | 38,1  | 620   |
| 51  | 85,0  | 153,0 | 47,8 | 50,8  | 860   |
| 63  | 95,0  | 163,0 | 60,5 | 63,5  | 950   |
| 76  | 105,0 | 173,0 | 72,9 | 76,2  | 1.100 |
| 101 | 140,0 | 173,0 | 97,6 | 101,6 | 2.760 |

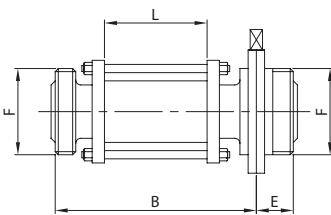
| DN  | A     | B     | F     | L    | gr    |
|-----|-------|-------|-------|------|-------|
| 25  | 55,0  | 155,6 | 46-8  | 83,0 | 550   |
| 38  | 70,0  | 155,6 | 58-8  | 83,0 | 940   |
| 51  | 85,0  | 155,6 | 73-6  | 83,0 | 1.270 |
| 63  | 95,0  | 155,6 | 85-6  | 83,0 | 1.400 |
| 76  | 105,0 | 155,6 | 98-6  | 83,0 | 1.710 |
| 101 | 140,0 | 155,6 | 123-6 | 83,0 | 3.760 |

| DN  | A     | B     | F     | L     | gr    |
|-----|-------|-------|-------|-------|-------|
| 25  | 51,0  | 163,3 | 46-8  | 55,0  | 630   |
| 38  | 65,0  | 166,3 | 58-8  | 70,0  | 1.080 |
| 51  | 80,0  | 166,3 | 73-6  | 85,0  | 1.480 |
| 63  | 92,0  | 168,3 | 85-6  | 95,0  | 1.830 |
| 76  | 104,0 | 173,3 | 98-6  | 105,0 | 2.120 |
| 101 | 130,0 | 173,3 | 123-6 | 140,0 | 4.170 |

| DN  | A     | B     | D     | E    | gr    |
|-----|-------|-------|-------|------|-------|
| 25  | 79,0  | 153,0 | 25,4  | 34,0 | 760   |
| 38  | 85,0  | 156,0 | 38,1  | 38,0 | 1.020 |
| 51  | 105,0 | 156,0 | 50,8  | 40,0 | 1.500 |
| 63  | 112,0 | 162,0 | 63,5  | 40,0 | 1.680 |
| 76  | 125,0 | 167,0 | 76,2  | 41,0 | 1.980 |
| 101 | 157,0 | 167,0 | 101,6 | 44,0 | 4.180 |

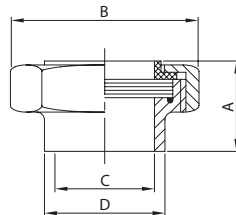
**SPECOLA EF. + V. F. EF.  
SIGHT GLASS ME. + B. V. ME.  
REGARD BF. + V. P. BF.  
MIRILLA ER. + V. M. ER.**

**462 B**



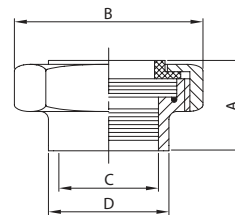
**SPECOLA PIANA ES.  
SIGHT GLASS WE.  
INDIC. DE CIRC. PLAT BS.  
MIRILLA PLANA ES.**

**441 B**



**SPECOLA PIANA EM.  
SIGHT GLASS EE.  
INDIC. DE CIRC. PLAT BD.  
MIRILLA PLANA EM.**

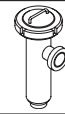
**442 B**



| DN  | B     | E    | F     | L    | gr    |
|-----|-------|------|-------|------|-------|
| 25  | 157,3 | 34,0 | 46-8  | 83,0 | 1.030 |
| 38  | 157,3 | 38,0 | 58-8  | 83,0 | 1.570 |
| 51  | 157,3 | 40,0 | 73-6  | 83,0 | 2.220 |
| 63  | 158,3 | 40,0 | 85-6  | 83,0 | 2.250 |
| 76  | 158,3 | 41,0 | 98-6  | 83,0 | 3.090 |
| 101 | 158,3 | 44,0 | 123-6 | 83,0 | 5.880 |

| DN  | A    | B     | C    | D     | gr    |
|-----|------|-------|------|-------|-------|
| 25  | 28,0 | 51,0  | 22,1 | 25,4  | 290   |
| 38  | 32,0 | 65,0  | 34,8 | 38,1  | 410   |
| 51  | 36,0 | 80,0  | 47,5 | 50,8  | 540   |
| 63  | 40,0 | 92,0  | 60,2 | 63,5  | 890   |
| 76  | 41,0 | 104,0 | 72,9 | 76,2  | 970   |
| 101 | 42,0 | 130,0 | 97,6 | 101,6 | 1.200 |

| DN  | A    | B     | C     | D     | gr    |
|-----|------|-------|-------|-------|-------|
| 25  | 28,0 | 51,0  | 25,4  | 32,5  | 290   |
| 38  | 32,0 | 65,0  | 38,1  | 45,2  | 410   |
| 51  | 36,0 | 80,0  | 50,8  | 58,0  | 540   |
| 63  | 40,0 | 92,0  | 63,5  | 70,6  | 890   |
| 76  | 41,0 | 104,0 | 76,2  | 83,3  | 970   |
| 101 | 42,0 | 130,0 | 101,6 | 109,0 | 1.200 |



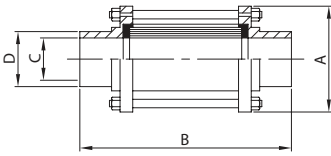
**SPECOLA EL.  
SIGHT GLASS PE.  
REGARD BL.  
MIRILLA EL.**

**SPECOLA EF/EF.  
SIGHT GLASS ME./ME.  
REGARD BF/BF.  
MIRILLA ER./ER.**

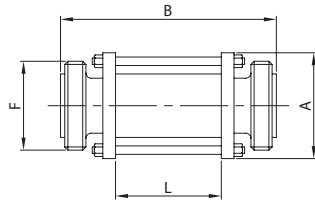
**SPECOLA BL. G./EF. MT.  
SIGHT GLASS L. N./ME. ED.  
REGARD PL. E./BF. DN.  
MIRILLA C. T./ER. MD.**

**SPECOLA EL. + V. F. EL.  
SIGHT GLASS PE. + B. V. PE.  
REGARD BL. + V. P. BL.  
MIRILLA EL. + V. M. EL.**

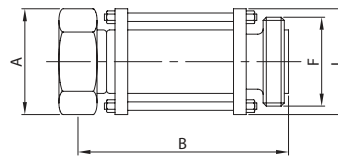
**450 L**



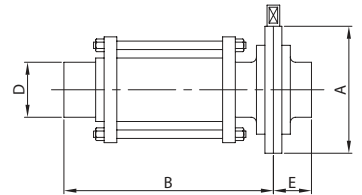
**452 I**



**454 I**



**460 L**



| DN  | A     | B     | C    | D     | gr    |
|-----|-------|-------|------|-------|-------|
| 25  | 55,0  | 147,0 | 22,4 | 25,4  | 400   |
| 38  | 70,0  | 153,0 | 35,1 | 38,1  | 620   |
| 51  | 85,0  | 153,0 | 47,8 | 50,8  | 860   |
| 63  | 95,0  | 163,0 | 60,5 | 63,5  | 950   |
| 76  | 105,0 | 173,0 | 72,9 | 76,2  | 1.100 |
| 101 | 140,0 | 173,0 | 97,6 | 101,6 | 2.760 |

| DN  | A     | B     | F     | L    | gr    |
|-----|-------|-------|-------|------|-------|
| 25  | 55,0  | 165,0 | 37-8  | 83,0 | 550   |
| 38  | 70,0  | 165,0 | 50-8  | 83,0 | 940   |
| 51  | 85,0  | 165,0 | 64-8  | 83,0 | 1.270 |
| 63  | 95,0  | 165,0 | 77-8  | 83,0 | 1.400 |
| 76  | 105,0 | 165,0 | 91-8  | 83,0 | 1.710 |
| 101 | 140,0 | 165,0 | 118-8 | 83,0 | 3.760 |

| DN  | A     | B     | F     | L     | gr    |
|-----|-------|-------|-------|-------|-------|
| 25  | 46,0  | 169,0 | 37-8  | 55,0  | 660   |
| 38  | 60,0  | 169,0 | 50-8  | 70,0  | 1.110 |
| 51  | 75,0  | 169,0 | 64-8  | 85,0  | 1.560 |
| 63  | 90,0  | 169,0 | 77-8  | 95,0  | 1.920 |
| 76  | 105,0 | 169,0 | 91-8  | 105,0 | 2.300 |
| 101 | 134,0 | 169,0 | 118-8 | 140,0 | 4.730 |

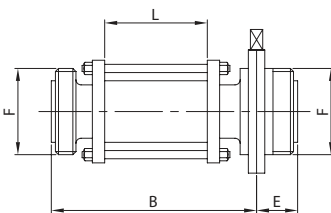
| DN  | A     | B     | D     | E    | gr    |
|-----|-------|-------|-------|------|-------|
| 25  | 79,0  | 153,0 | 25,4  | 34,0 | 760   |
| 38  | 85,0  | 156,0 | 38,1  | 38,0 | 1.020 |
| 51  | 105,0 | 156,0 | 50,8  | 40,0 | 1.500 |
| 63  | 112,0 | 162,0 | 63,5  | 40,0 | 1.680 |
| 76  | 125,0 | 167,0 | 76,2  | 41,0 | 1.980 |
| 101 | 157,0 | 167,0 | 101,6 | 44,0 | 4.180 |

**SPECOLA EF. + V. F. EF.  
SIGHT GLASS ME. + B. V. ME.  
REGARD BF. + V. P. BF.  
MIRILLA ER. + V. M. ER.**

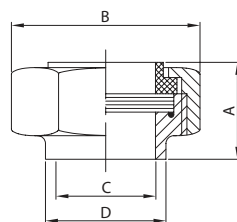
**SPECOLA PIANA ES.  
SIGHT GLASS WE.  
INDIC. DE CIRC. PLAT BS.  
MIRILLA PLANA ES.**

**SPECOLA PIANA EM.  
SIGHT GLASS EE.  
INDIC. DE CIRC. PLAT BD.  
MIRILLA PLANA EM.**

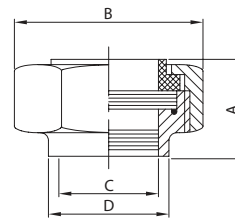
**462 I**



**441 I**



**442 I**



| DN  | B     | E    | F     | L    | gr    |
|-----|-------|------|-------|------|-------|
| 25  | 162,0 | 34,0 | 37-8  | 83,0 | 1.010 |
| 38  | 162,0 | 38,0 | 50-8  | 83,0 | 1.520 |
| 51  | 162,0 | 40,0 | 64-8  | 83,0 | 2.090 |
| 63  | 163,0 | 40,0 | 77-8  | 83,0 | 2.310 |
| 76  | 163,0 | 41,0 | 91-8  | 83,0 | 2.820 |
| 101 | 163,0 | 44,0 | 118-8 | 83,0 | 5.480 |

| DN  | A    | B     | C    | D     | gr    |
|-----|------|-------|------|-------|-------|
| 25  | 28,0 | 46,0  | 22,1 | 25,4  | 300   |
| 38  | 32,0 | 60,0  | 34,8 | 38,1  | 430   |
| 51  | 36,0 | 75,0  | 47,5 | 50,8  | 600   |
| 63  | 40,0 | 90,0  | 60,2 | 63,5  | 940   |
| 76  | 41,0 | 105,0 | 72,9 | 76,2  | 1.120 |
| 101 | 42,0 | 134,0 | 97,6 | 101,6 | 1.670 |

| DN  | A    | B     | C     | D     | gr    |
|-----|------|-------|-------|-------|-------|
| 25  | 28,0 | 46,0  | 25,4  | 29,0  | 200   |
| 38  | 32,0 | 60,0  | 38,1  | 42,5  | 430   |
| 51  | 36,0 | 75,0  | 50,8  | 56,0  | 600   |
| 63  | 40,0 | 90,0  | 63,5  | 69,7  | 940   |
| 76  | 41,0 | 105,0 | 76,2  | 82,3  | 1.120 |
| 101 | 42,0 | 134,0 | 101,6 | 108,5 | 1.670 |