

# YGROS YEV

THE SIMPLEST MAGNETIC CHECK VALVE

*FOR FOOD AND BEVERAGE PLANTS*



**YGROS®**  
**VALVES**  
*Let it flow*

***"YGROS patented technology sets new standards in the world of plant design, thanks to a patented magnetic principle replacing the conventional spring in Non Return Valves"***

*Suitable for horizontal, vertical up and down installation*

***For food and beverage plants. Up to 150°C***

*Finally the Simplest Model of YGROS Magnetic Check Valves*



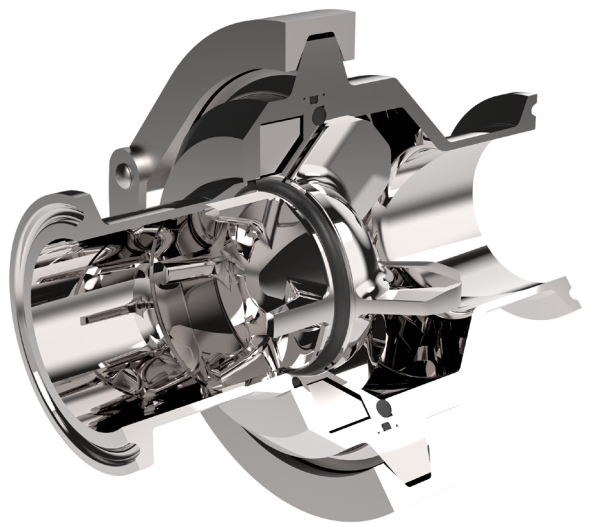
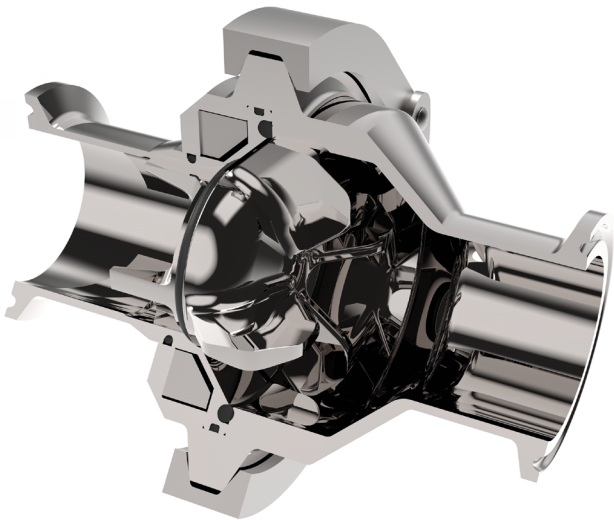
### **BENEFITS:**

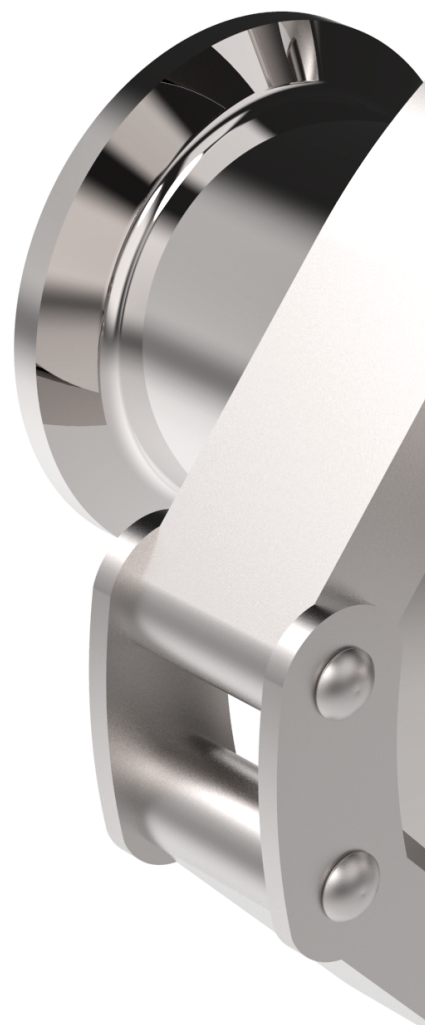
- *Energy Saving:* The innovative working principle and design allow for a smooth flow, minimizing pressure drop
- *Any installation position possible:* unlike other check valves, an Ygros Valve can be installed in horizontal and vertical up and down positions
- *Laminar flow:* no turbulences. This is particularly suitable for carbonated drinks or beer
- *Maintenance free*



## TECHNICAL DATA

Product contact materials	Body and flanges: Stainless steel 1.4404 (AISI 316L) Shutter: 1.4462 (Duplex)
Seal material options	EPDM, NBR, HNBR, VMQ (Silicone), FKM (Viton), FEP, PTFE <small>*If the valve is 3-A certified, HNBR, FEP and PTFE are NOT available</small>
Surface finishes	<ul style="list-style-type: none"> <li>• Internal: <math>R_a \leq 0.8</math></li> <li>• External: <math>R_a \leq 3.2</math></li> </ul>
End connection options	WELDING DIN 11850 (DIN 11866 Reihe A) WELDING ASME BPE (DIN 11866 Reihe C) TRI-CLAMP ASME BPE
Sizes	From DN15 to DN100 / From $\frac{3}{4}$ " to 4"
Temperature range	-40°C / +150°C
Operating pressure	PN16
Media	Food and beverage, liquid
Certifications (on request)	3.1 / FDA / Surface roughness / EC 1935/2004 / 3-A





## CAROLLO SRL

Via Pettinà Luigi, 24 - 36010 ZANE' (VI) ITALY **Tel.** +39 0445 314158 - **Fax** +39 0445 319538

**E-mail** [ygros@ygros.com](mailto:ygros@ygros.com)

**Web** [www.ygros.com](http://www.ygros.com)

